

ONLINE CATALOGUE

Advice guide

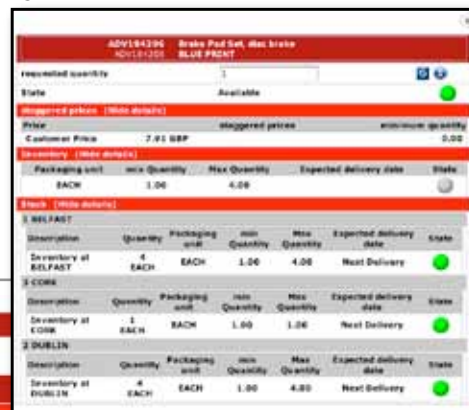





Below is a guide to the “traffic light” system used on the new online ordering system.

It should be noted that to gain access to the online ordering module from within the CD Portal, **popups should be allowed** for the portal.cd-group.com site.

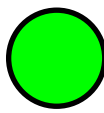
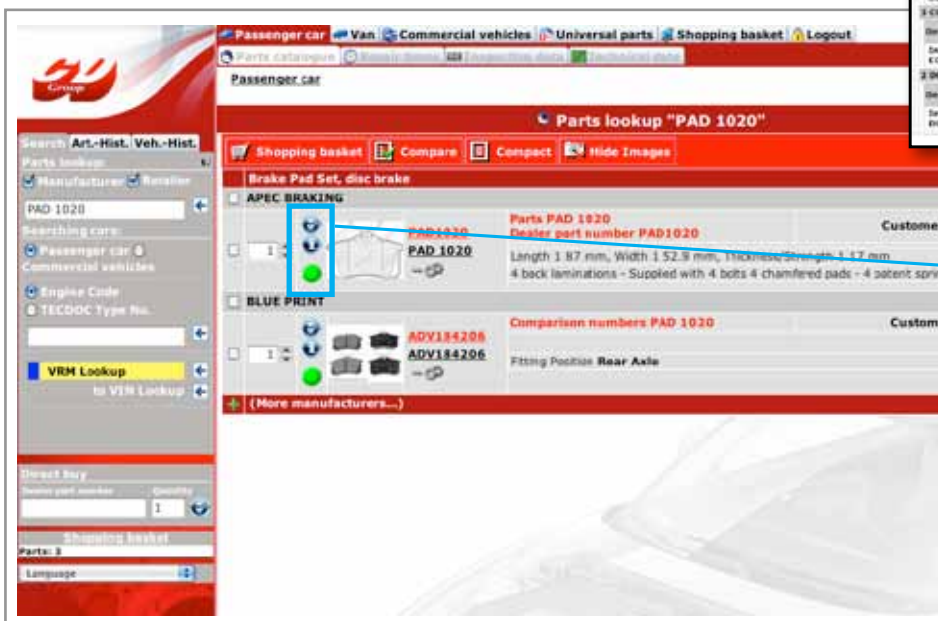
For more info on how to do this go to www.cd-group.com/advice.html

fig. 1



-  Customer basket
-  Product info, stock location & availability
-  Status indicator

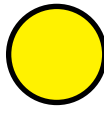
Click the information button at any time to see details and exact location of your selected product. Quantities can also be altered in this section (fig. 1)



Requested quantity **available in full** from your nearest CD Depot. Order can be delivered on next scheduled CD Van.



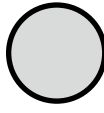
Total requested quantity not available from your local CD Depot. Partial order available on next scheduled van, with remaining quantity to follow overnight from alternate depot.



No stock at your local CD Depot. Requested quantity can be delivered overnight from alternate CD Depot.



No stock available at any CD Depot. Please ring your local CD Depot to place a special order.



Non-stocking part number. Please ring your local CD Depot to place a special order.

COMPONENT DISTRIBUTORS

www.cd-group.com
info@cd-group.com

Mallusk

Dublin

Cork

t: (028) 90 341 999 f: (028) 90 341 988

t: (01) 820 8860 f: (01) 820 8908

t: (01) 454 7070 f: (01) 454 7077